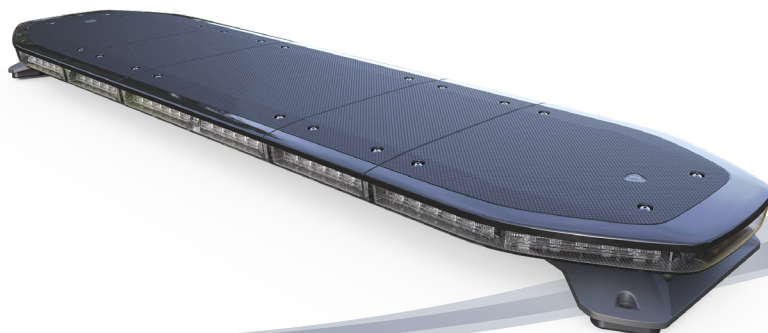


RAIDEN FIT PLUS



ULTRA LOW PROFILE LIGHTBAR
w/ Optional Programmer



FEATURES

- **Ultra Low-Profile:** At only 4cm (1.69") in height, the Raiden FIT PLUS™ lightbar is amongst the thinnest premium lightbars on the market.
- **Ambient Light Sensor:** Built-in sensor that detects ambient light and automatically activates or deactivates the lower-intensity 'by night' operation.
- **Single, Dual Colour Lighthead:** Multiple choices of colour combinations.
- **Powerful Optics:** 360 degree seamless output that meet and exceed ECE R65 Class 2, SAE and ICAO standards.
- **Quality and Durability:** Highest tier premium bar that is built to last and protect your road safety.
- **Multi-Voltage:** Input 12-24VDC with EMC Compliance.
- **Easy maintenance:** Simple removal of top cover for re-configuration or replacement of lighthead.
- **Fully-Programmable:** All function wires and individual lighthead actions may be customised and re-programmed to user's preference via optional programmer.

SPECIFICATIONS

Compliance: SAE J845 Class 1; CA Title 13;
ECE R65 Class 2 (TA2/TB2/TR2); ECE R10; CISPR25 Class 3;
ICAO (Amber, corners and ends activated only)

NOTE: actual approvals may vary; based on actual lightbar configuration.

Operating Voltage: 9-34VDC

Cable & Wire Gauge: Single Loom Cable, 500 cm (16.4 Feet)

42" (1066 mm) ~ 60" (1523 mm)

Power Cores - 2 wires @ 3.3mm² (12AWG)

Function Cores: 8 wires @ 0.2mm² (24AWG)

66" (1676 mm) ~ 72" (1829 mm)

Power Cores - 2 wires @ 5.2mm² (10AWG)

Function Cores: 8 wires @ 0.2mm² (24AWG)

No. of LEDs: Single Colour Lighthead - 3LED or 6LED per Lighthead
Dual Colour Lighthead - 12LED per Lighthead

COLOUR OPTIONS

LED Colour: Amber, Blue, Green, Red, White (Single or Dual)

Lens Colour: Clear

Top Cover Colour: Amber, Black, Blue, Clear, Red

▼ Single colour 3LED



▼ Single 6LED/Dual 12LED



CURRENT & POWER RATING

CURRENT	@12.8VDC		@25.6VDC	
	Max. Current (A)	Avg. Current (A)	Max. Current (A)	Avg. Current (A)
6LED Single Colour Lighthead	0.86 / each	0.43 / each	0.43 / each	0.21 / each
6+6LED Dual Colour Lighthead	0.86 / each	0.43 / each	0.43 / each	0.21 / each
3LED Single Colour Lighthead	0.41 / each	0.2 / each	0.2 / each	0.09 / each

POWER	@12.8VDC		@25.6VDC	
	Max. Power(W)	Avg. Power (W)	Max. Power(W)	Avg. Power (W)
6LED Single Colour Lighthead	11.01 / each	5.5 / each	11.01 / each	5.38 / each
6+6LED Dual Colour Lighthead	11.01 / each	5.5 / each	11.01 / each	5.38 / each
3LED Single Colour Lighthead	5.25 / each	2.56 / each	5.12 / each	2.30 / each

NOTE: Please calculate the total Current and Power consumption based on your lightbar configuration.

SUGGESTED FUSE RATING

FUSE RATING	@12.8VDC	@25.6VDC
6LED Single Colour Lighthead	1.16A / each	0.58A / each
6+6LED Dual Colour Lighthead	1.16A / each	0.58A / each
3LED Single Colour Lighthead	0.55A / each	0.27A / each

NOTE: Please calculate the total fuse rating needed based on your lightbar configuration.

TA FLASH PATTERNS

FLASH PATTERN CHART	
1	Sweep Single(Default) *
2	Sweep Double *
3	Sweep Triple *
4	Sweep Single End-Double *
5	Solid *
6	Solid End-Double *
7	Solid Chaser *
8	Solid Fade *
9	Blink Double *
10	Blink Triple *
11	Blink Solid *

* Dim Mode is not applicable.

ILLUMINATION AREAS

FLASH PATTERN CHART	
1	TDs & Alleys(Default)
2	TDs
3	Alleys
4	Front TD
5	Rear TD



BAR PATTERN

#	SAE (BL & BD Versions)	Grouping	#	ECE (BE & BF Versions)	Grouping
1	Single [SAE, CA13] <i>(Mode 2 & 3 Default)</i>	All	1	Double (Corners & Ends) [R65] <i>(Mode 2 & 3 Default)</i>	Corners & Ends
2	Double [SAE]	All	2	Double [2Hz]	All
3	Quad [SAE]	All	3	Quad [2Hz]	All
4	Quint [SAE]	All	4	Single [2Hz]	All
5	Mega	All	5	Triple [2Hz]	All
6	Ultra [SAE]	All	6	Double [2Hz]	Left-Right
7	Single-Quad	All	7	Quad [2Hz]	Left-Right
8	Single H/L	All	8	Single [2Hz]	Left-Right
9	Single-Triple-Quint	All	9	Triple [2Hz]	Left-Right
10	Single	Left-Right	10	ICAO Single *	Corners & Ends
11	Double	Left-Right	11	Single [1.25Hz] *	All
12	Quad	Left-Right	12	Clockwise Pulsing Chaser	All
13	Quint	Left-Right	13	Clockwise Pulsing Chaser Fast	All
14	Mega	Left-Right	14	Random	All
15	Ultra	Left-Right	15	Steady Max *	Adjustable
16	Single-Quad	Left-Right	16	Pulsing *	All
17	Single H/L	Left-Right	17	Steady 100% *	Adjustable
18	Single-Triple-Quint	Left-Right	18	Clockwise Pulsing Chaser *	All
19	Single	Outside-in	19	Cruise Mode (Steady 50%) * <i>(Mode 1 Default)</i>	Adjustable
20	Ultra	Outside-in	20	Clockwise Pulsing Scan *	All
21	Single	Side-by-side	21	Steady 1% *	Adjustable
22	Ultra	Side-by-side	22	Butterfly Pulsing Scan *	All
23	Single	Criss-cross	23	Pulsing Scan Wig-Wag *	Left-Right
24	Ultra	Criss-cross	24	Pulsing Scan Wig-Wag *	Outside-in
25	Clockwise Pulsing Chaser	All	25	Double-Double	Left-Right
26	Clockwise Pulsing Chaser Fast	All	26	Quad-Quad	Left-Right
27	Random	All	27	Triple-Blast	Left-Right
28	Steady Max *	Adjustable	28	Double-Double	Outside-in
29	Pulsing *	All	29	Quad-Quad	Outside-in
30	Steady 100% *	Adjustable	31	Triple-Blast	Outside-in
31	Clockwise Pulsing Chaser *	All	31	Swing II	Outside-in
32	Cruise Mode (Steady 50%) * <i>(Mode 1 Default)</i>	Adjustable			
33	Clockwise Pulsing Scan *	All			
34	Steady 1% *	Adjustable			
35	Butterfly Pulsing Scan *	All			
36	Pulsing Scan Wig-Wag *	Left-Right			
37	Pulsing Scan Wig-Wag *	Outside-in			
38	Double-Double	Left-Right			
39	Quad-Quad	Left-Right			
40	Triple-Blast	Left-Right			
41	Double-Double	Outside-in			
42	Quad-Quad	Outside-in			
43	Triple-Blast	Outside-in			
44	Swing II	Outside-in			
45	ICAO Single *	Corners & Ends			
46	Single [1.25Hz] *	All			

* Dim Mode is not applicable.

MOUNTING OPTIONS & ACCESSORIES

06570736

Low Profile Standard Brackets (2PCS)



06300166

Low Profile Narrow Flat Surface Mount Brackets (2PCS)



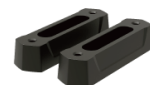
06300432

Low Profile Wide Flat Surface Mount Brackets (2PCS)



06490539

35mm Rubber Mounting Feet (2PCS)



06301880

Low Profile Narrow Flat Surface Mount Brackets (3PCS), for 66" & 72" Lightbar

06301897

Low Profile Wide Flat Surface Mount Brackets (3PCS), for 66" & 72" Lightbar

06570743

35mm Rubber Mounting Feet (3PCS), for 66" & 72" Lightbar

06440350

2° Angled Gasket (2PCS)



Rev. 240530

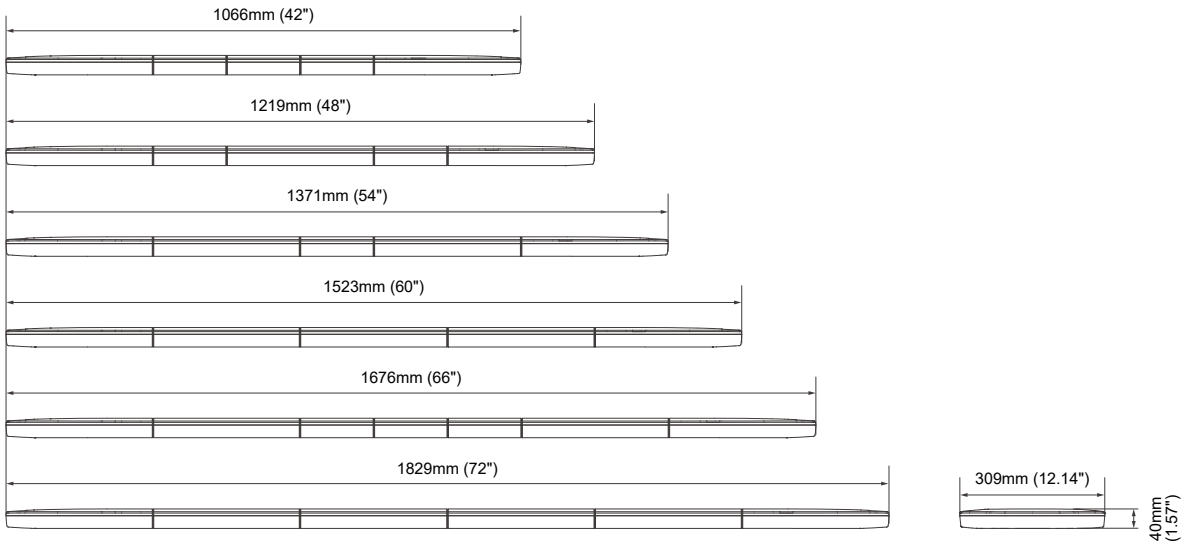
sales@cell2.com

+44(0)2033 285 494



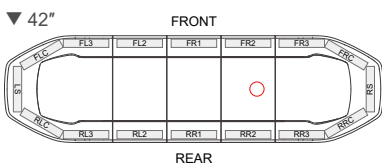
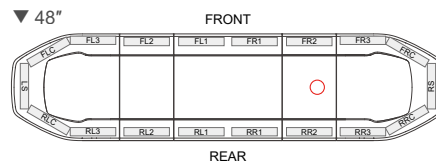
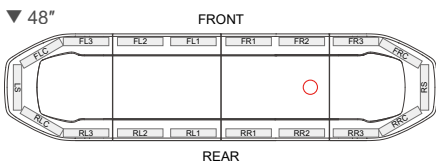
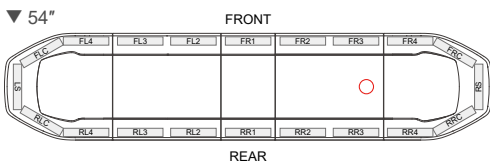
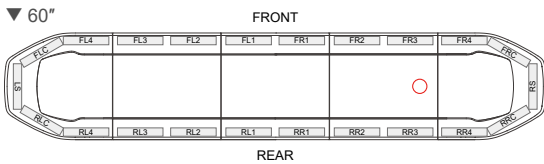
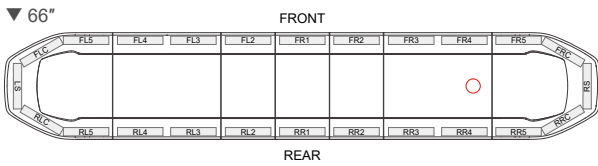
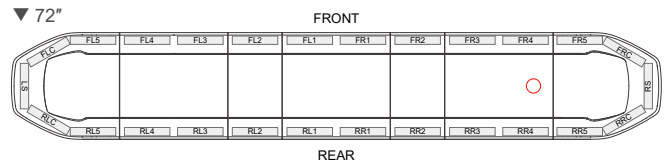
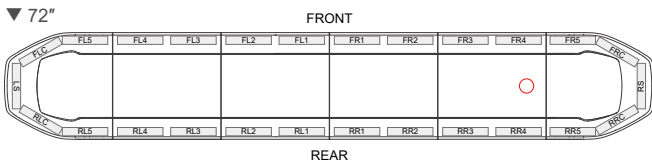
DIMENSIONS

Available Model Length:



LAYOUT

Standard Model



NOTE: Models shown above are standard layouts. For customized lighthead configuration, contact your sales representative.

○ : Default Cable-Exit

